

**SLC25A36 Mouse mAb[369S]**

**Cat NO. :A69140**

**Information:**

Applications	Reactivity:	UniProt ID:	MW(kDa)	Host	Isotype	Size
WB,IHC	H,M,R	Q96CQ1	33kda	Mouse	IgG	100ul,200ul

**Applications detail:**

Application	Dilution
WB	1:1000-2000
IHC	1:100
The optimal dilutions should be determined by the end user	

**Conjugate:**

UnConjugate

**Form:**

Liquid

**sensitivity:**

Endogenous

**Purification:**

Protein A purification

**Specificity:**

Antibody is produced by immunizing animals with a synthetic peptide of human SLC25A36.

**Storage buffer and conditions:**

Antibody store in 10 mM PBS, 0.5mg/ml BSA, 50% glycerol (buffer) .

Shipped at 4°C. Store at -20°C or -80°C.

Products are valid for one natural year of receipt.Avoid repeated freeze / thaw cycles.

**Tissue specificity:**

Expressed at moderate level..

**Subcellular location:**

Mitochondrion inner membrane,Multi-pass membrane protein.

**Function:**

Mitochondrial transporter that imports/exports pyrimidine nucleotides into and from mitochondria. Transports preferentially cytosine and uracil (deoxy)nucleoside mono-, di-, and triphosphates by uniport and antiport mechanism. Also transports guanine but not adenine (deoxy)nucleotides. Is inhibited strongly by pyridoxal 5'-phosphate, 4,7-diphenyl-1,10-phenanthroline, tannic acid, and mercurials (mercury dichloride, Mersaly acid, p-hydroxymercuribenzoate). Participates in mitochondrial genome maintenance, regulation of mitochondrial membrane potential and mitochondrial respiration..

**Introduction:** **WB:** Western Blot **IP:** Immunoprecipitation **IHC:** Immunohistochemistry **ChIP:** Chromatin Immunoprecipitation **ICC/IF:** Immunocytochemistry/Immunofluorescence **F:** Flow Cytometry

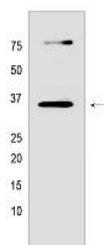
**Cross Reactivity:** **H:** human **M:** mouse **R:** rat **Hm:** hamster **Mk:** monkey **Vir:** virus **Ml:** mink **C:** chicken **Dm** D. melanogaster **X:** Xenopus **Z:** zebrafish **B:** bovine **Dg:** dog **Pg:** pig **Hr:** horse

**For Research Use Only. Not For Use In Diagnostic Procedures.**

## Validation Data:

### SLC25A36 Mouse mAb[369S] Images

---



Western blot ( SDS PAGE ) analysis of extracts from LNCaP cells. Using SLC25A36 Mouse mAb IgG [369S] at dilution of 1:1000 incubated at 4°C over night.

View more information on <http://naturebios.com>

**IMPORTANT:** For western blots, incubate membrane with diluted primary antibody in 1% w/v Milk, 1X TBST at 4°C overnight.