

GLUT2/SLC2A2 Rabbit mAb[8JL5]

Cat NO. :A69769

Information:

Applications	Reactivity:	UniProt ID:	MW(kDa)	Host	Isotype	Size
WB,ICC/IF	H,M,R	P11168	57kDa	Rabbit	IgG	50ul 100ul,200ul

Applications detail:

Application	Dilution
WB	1:1000-2000
ICC/IF	1:100
The optimal dilutions should be determined by the end user	

Conjugate:

UnConjugate

Form:

Liquid

sensitivity:

Endogenous

Purification:

Protein A purification

Specificity:

Antibody is produced by immunizing animals with a synthetic peptide of human GLUT2/SLC2A2.

Storage buffer and conditions:

Antibody store in 10 mM PBS, 0.5mg/ml BSA, 50% glycerol (buffer) .

Shipped at 4°C. Store at-20°C or -80°C.

Products are valid for one natural year of receipt.Avoid repeated freeze / thaw cycles.

Tissue specificity:

Liver, insulin-producing beta cell, small intestine and kidney..

Subcellular location:

Cell membrane,Multi-pass membrane protein.

Function:

Facilitative hexose transporter that mediates the transport of glucose and fructose (PubMed:8027028, PubMed:16186102, PubMed:23396969, PubMed:28083649). Likely mediates the bidirectional transfer of glucose across the plasma membrane of hepatocytes and is responsible for uptake of glucose by the beta cells,may comprise part of the glucose-sensing mechanism of the beta cell (PubMed:8027028). May also participate with the Na(+)/glucose cotransporter in the transcellular transport of glucose in the small intestine and kidney (PubMed:3399500). Also able to mediate the transport of dehydroascorbate (PubMed:23396969)..

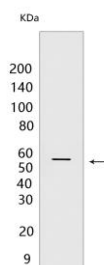
Introduction: **WB:** Western Blot **IP:** Immunoprecipitation **IHC:** Immunohistochemistry **ChIP:** Chromatin Immunoprecipitation **ICC/IF:** Immunocytochemistry/Immunofluorescence **F:** Flow Cytometry

Cross Reactivity: **H:** human **M:** mouse **R:** rat **Hm:** hamster **Mk:** monkey **Vir:** virus **Ml:** mink **C:** chicken **Dm** D. melanogaster **X:** Xenopus **Z:** zebrafish **B:** bovine **Dg:** dog **Pg:** pig **Hr:** horse

For Research Use Only. Not For Use In Diagnostic Procedures.

Validation Data:

GLUT2/SLC2A2 Rabbit mAb[8JL5] Images



Western blot (SDS PAGE) analysis of extracts from HT-29 cells. Using GLUT2/SLC2A2 Rabbit mAb IgG [8JL5] at dilution of 1:1000 incubated at 4°C over night.

View more information on <http://naturebios.com>

IMPORTANT: For western blots, incubate membrane with diluted primary antibody in 1% w/v Milk, 1X TBST at 4°C overnight.