

Dopamine Transporter Rabbit mAb [3Q5N]

Cat NO. :A74350

Information:

Applications	Reactivity:	UniProt ID:	MW(kDa)	Host	Isotype	Size
WB,IHC	H,M,R	Q01959	70-85 kDa	Rabbit	IgG	100ul,200ul

Applications detail:

Application	Dilution
WB	1:1000-2000
IHC	1:100
The optimal dilutions should be determined by the end user	

Conjugate:

UnConjugate

Form:

Liquid

sensitivity:

Endogenous

Purification:

Protein A purification

Specificity:

Antibody is produced by immunizing animals with a synthetic peptide at the sequence of human Dopamine Transporter

Storage buffer and conditions:

Antibody store in 10 mM PBS, 0.5mg/ml BSA, 50% glycerol (buffer) .

Shipped at 4°C. Store at-20°C or -80°C.

Products are valid for one natural year of receipt.Avoid repeated freeze / thaw cycles.

Tissue specificity:

Highly expressed in substantia nigra (PubMed:7637582). Expressed in axonal varicosities in dopaminergic nerve terminals (at protein level) (PubMed:17296554). Expressed in the striatum (at protein

Subcellular location:

Cell membrane,Multi-pass membrane protein. Cell projection, neuron projection. Cell projection, axon.

Function:

Introduction: **WB:** Western Blot **IP:** Immunoprecipitation **IHC:** Immunohistochemistry **ChIP:** Chromatin Immunoprecipitation **ICC/IF:** Immunocytochemistry/Immunofluorescence **F:** Flow Cytometry

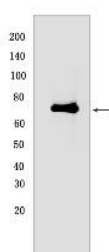
Cross Reactivity: **H:** human **M:** mouse **R:** rat **Hm:** hamster **Mk:** monkey **Vir:** virus **Ml:** mink **C:** chicken **Dm** D. melanogaster **X:** Xenopus **Z:** zebrafish **B:** bovine **Dg:** dog **Pg:** pig **Hr:** horse

For Research Use Only. Not For Use In Diagnostic Procedures.

Amine transporter (PubMed:1406597, PubMed:8302271, PubMed:15505207). Terminates the action of dopamine by its high affinity sodium-dependent reuptake into presynaptic terminals (By similarity). Regulator of light-dependent retinal hyaloid vessel regression, downstream of OPN5 signaling (By similarity)..

Validation Data:

Dopamine Transporter Rabbit mAb [3Q5N] Images



Western blot (SDS PAGE) analysis of extracts from Mouse striatum I. Using Dopamine Transporter Rabbit mAb [3Q5N] at dilution of 1:1000 incubated at 4°C over

View more information on <http://naturebios.com>

IMPORTANT: For western blots, incubate membrane with diluted primary antibody in 1% w/v Milk, 1X TBST at 4°C overnight.

For Research Use Only. Not For Use In Diagnostic Procedures.