

**Furin Rabbit mAb [TS9K]**

**Cat NO. :A75517**

**Information:**

Applications	Reactivity:	UniProt ID:	MW(kDa)	Host	Isotype	Size
WB,IHC,ICC/IF	H,M,R	P09958	87 kDa	Rabbit	IgG	100ul,200ul

**Applications detail:**

Application	Dilution
WB	1:1000-2000
IHC	1:100
ICC/IF	1:100
The optimal dilutions should be determined by the end user	

**Conjugate:**

UnConjugate

**Form:**

Liquid

**sensitivity:**

Endogenous

**Purification:**

Protein A purification

**Specificity:**

Antibody is produced by immunizing animals with a synthetic peptide at the sequence of human Furin

**Storage buffer and conditions:**

Antibody store in 10 mM PBS, 0.5mg/ml BSA, 50% glycerol (buffer) .

Shipped at 4°C. Store at-20°C or -80°C.

Products are valid for one natural year of receipt.Avoid repeated freeze / thaw cycles.

**Tissue specificity:**

Seems to be expressed ubiquitously..

**Subcellular location:**

Golgi apparatus, trans-Golgi network membrane,Single-pass type I membrane protein. Cell membrane,Single-pass type I membrane protein. Secreted. Endosome membrane,Single-pass type I membrane protein.

**Function:**

**Introduction:** **WB:** Western Blot **IP:** Immunoprecipitation **IHC:** Immunohistochemistry **ChIP:** Chromatin Immunoprecipitation **ICC/IF:** Immunocytochemistry/Immunofluorescence **F:** Flow Cytometry

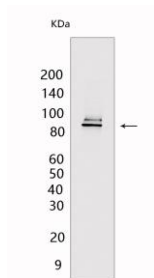
**Cross Reactivity:** **H:** human **M:** mouse **R:** rat **Hm:** hamster **Mk:** monkey **Vir:** virus **Ml:** mink **C:** chicken **Dm** D. melanogaster **X:** Xenopus **Z:** zebrafish **B:** bovine **Dg:** dog **Pg:** pig **Hr:** horse

**For Research Use Only. Not For Use In Diagnostic Procedures.**

Ubiquitous endoprotease within constitutive secretory pathways capable of cleavage at the RX(K/R)R consensus motif (PubMed:11799113, PubMed:1629222, PubMed:1713771, PubMed:2251280, PubMed:24666235, PubMed:25974265, PubMed:7592877, PubMed:7690548, PubMed:9130696). Mediates processing of TGFB1, an essential step in TGF-beta-1 activation (PubMed:7737999). Converts through proteolytic cleavage the non-functional Brain natriuretic factor prohormone into its active hormone BNP(1-32) (PubMed:20489134, PubMed:21763278). By mediating processing of accessory subunit ATP6AP1/Ac45 of the V-ATPase, regulates the acidification of dense-core secretory granules in islets of Langerhans cells (By similarity)... (Microbial infection) Cleaves and activates diphtheria toxin DT..., (Microbial infection) Cleaves and activates anthrax toxin protective antigen (PA)... (Microbial infection) Required for H7N1 and H5N1 influenza virus infection probably by cleaving hemagglutinin..., (Microbial infection) Able to cleave S.pneumoniae serine-rich repeat protein PsrP..., (Microbial infection) Facilitates human coronaviruses EMC and SARS-CoV-2 infections by proteolytically cleaving the spike protein at the monobasic S1/S2 cleavage site. This cleavage is essential for spike protein-mediated cell-cell fusion and entry into human lung cells..., (Microbial infection) Facilitates mumps virus infection by proteolytically cleaving the viral fusion protein F..

## Validation Data:

### Furin Rabbit mAb [TS9K] Images



Western blot (SDS PAGE) analysis of extracts from HepG2 cells. Using Furin Rabbit mAb [TS9K] at dilution of 1:1000 incubated at 4°C over night.

View more information on <http://naturebios.com>

**IMPORTANT:** For western blots, incubate membrane with diluted primary antibody in 1% w/v Milk, 1X TBST at 4°C overnight.