

RHAG Rabbit mAb [C2J1]

Cat NO. :A75605

Information:

Applications	Reactivity:	UniProt ID:	MW(kDa)	Host	Isotype	Size
WB,IHC	H	Q02094	44 kDa	Rabbit	IgG	100ul,200ul

Applications detail:

Application	Dilution
WB	1:1000-2000
IHC	1:100,
The optimal dilutions should be determined by the end user	

Conjugate:

UnConjugate

Form:

Liquid

sensitivity:

Endogenous

Purification:

Protein A purification

Specificity:

Antibody is produced by immunizing animals with a synthetic peptide of Human RHAG.

Storage buffer and conditions:

Antibody store in 10 mM PBS, 0.5mg/ml BSA, 50% glycerol (buffer) .

Shipped at 4°C. Store at-20°C or -80°C.

Products are valid for one natural year of receipt.Avoid repeated freeze / thaw cycles.

Tissue specificity:

Erythrocytes..

Subcellular location:

Membrane,Multi-pass membrane protein.

Function:

Associated with rhesus blood group antigen expression (PubMed:19744193). May be part of an oligomeric complex which is likely to have a transport or channel function in the erythrocyte membrane (PubMed:11062476, PubMed:11861637). Involved in ammonia transport across the erythrocyte membrane (PubMed:21849667, PubMed:22012326). Seems to act in monovalent cation transport (PubMed:18931342, PubMed:21849667)..

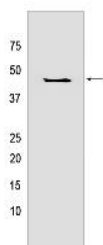
Introduction: **WB:** Western Blot **IP:** Immunoprecipitation **IHC:** Immunohistochemistry **ChIP:** Chromatin Immunoprecipitation **ICC/IF:** Immunocytochemistry/Immunofluorescence **F:** Flow Cytometry

Cross Reactivity: **H:** human **M:** mouse **R:** rat **Hm:** hamster **Mk:** monkey **Vir:** virus **Ml:** mink **C:** chicken **Dm** D. melanogaster **X:** Xenopus **Z:** zebrafish **B:** bovine **Dg:** dog **Pg:** pig **Hr:** horse

For Research Use Only. Not For Use In Diagnostic Procedures.

Validation Data:

RHAG Rabbit mAb [C2J1] Images



Western blot (SDS PAGE) analysis of extracts from Human fetal kidney tissue lyaste.using RHAG Rabbit mAb [C2J1] at dilution of 1:1000 incubated at 4°C over night

View more information on <http://naturebios.com>

IMPORTANT: For western blots, incubate membrane with diluted primary antibody in 1% w/v Milk, 1X TBST at 4°C overnight.