

SMUG1 Rabbit mAb [M4BK]

Cat NO. :A75675

Information:

Applications	Reactivity:	UniProt ID:	MW(kDa)	Host	Isotype	Size
WB	H	Q53HV7	30 kDa	Rabbit	IgG	100ul,200ul

Applications detail:

Application	Dilution
WB	1:1000-2000
The optimal dilutions should be determined by the end user	

Conjugate:

UnConjugate

Form:

Liquid

sensitivity:

Endogenous

Purification:

Protein A purification

Specificity:

Antibody is produced by immunizing animals with a synthetic peptide at the sequence of human SMUG1

Storage buffer and conditions:

Antibody store in 10 mM PBS, 0.5mg/ml BSA, 50% glycerol (buffer) .

Shipped at 4°C. Store at -20°C or -80°C.

Products are valid for one natural year of receipt.Avoid repeated freeze / thaw cycles.

Tissue specificity:

Subcellular location:

Nucleus.

Function:

Recognizes base lesions in the genome and initiates base excision DNA repair. Acts as a monofunctional DNA glycosylase specific for uracil (U) residues in DNA with a preference for single-stranded DNA substrates. The activity is greater toward mismatches (U/G) compared to matches (U/A). Excises uracil (U), 5-formyluracil (fU) and uracil derivatives bearing an oxidized group at C5 [5-hydroxyuracil (hoU) and 5-hydroxymethyluracil (hmU)] in ssDNA and dsDNA, but not analogous cytosine derivatives (5-hydroxycytosine and 5-formylcytosine), nor other oxidized bases. The activity is damage-specific and salt-dependent. The substrate preference is the following:

Introduction: **WB:** Western Blot **IP:** Immunoprecipitation **IHC:** Immunohistochemistry **ChIP:** Chromatin Immunoprecipitation **ICC/IF:** Immunocytochemistry/Immunofluorescence **F:** Flow Cytometry

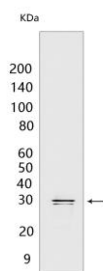
Cross Reactivity: **H:** human **M:** mouse **R:** rat **Hm:** hamster **Mk:** monkey **Vir:** virus **Ml:** mink **C:** chicken **Dm** D. melanogaster **X:** Xenopus **Z:** zebrafish **B:** bovine **Dg:** dog **Pg:** pig **Hr:** horse

For Research Use Only. Not For Use In Diagnostic Procedures.

ssDNA > dsDNA (G pair) = dsDNA (A pair) at low salt concentration, and dsDNA (G pair) > dsDNA (A pair) > ssDNA at high salt concentration..

Validation Data:

SMUG1 Rabbit mAb [M4BK] Images



Western blot (SDS PAGE) analysis of extracts from HAP1 cells. Using SMUG1 Rabbit mAb [M4BK] at dilution of 1:1000 incubated at 4°C over night.

View more information on <http://naturebios.com>

IMPORTANT: For western blots, incubate membrane with diluted primary antibody in 1% w/v Milk, 1X TBST at 4°C overnight.