

PHYHD1 Rabbit mAb [2I09]

Cat NO. :A75727

Information:

Applications	Reactivity:	UniProt ID:	MW(kDa)	Host	Isotype	Size
WB,ICC/IF	H	Q5SRE7	32 kDa	Rabbit	IgG	100ul,200ul

Applications detail:

Application	Dilution
WB	1:1000-2000
ICC/IF	1:100,
The optimal dilutions should be determined by the end user	

Conjugate:

UnConjugate

Form:

Liquid

sensitivity:

Endogenous

Purification:

Protein A purification

Specificity:

Antibody is produced by immunizing animals with a synthetic peptide of Human PHYHD1.

Storage buffer and conditions:

Antibody store in 10 mM PBS, 0.5mg/ml BSA, 50% glycerol (buffer) .

Shipped at 4°C. Store at-20°C or -80°C.

Products are valid for one natural year of receipt.Avoid repeated freeze / thaw cycles.

Tissue specificity:

Subcellular location:

Function:

2-oxoglutarate(2OG)-dependent dioxygenase that catalyzes the conversion of 2-oxoglutarate to succinate and CO(2) in an iron-dependent manner (PubMed:21530488). However, does not couple 2OG turnover to the hydroxylation of acyl-coenzyme A derivatives, implying that it is not directly involved in phytanoyl coenzyme-A metabolism (PubMed:21530488). Does not show detectable activity towards fatty acid CoA thioesters (PubMed:21530488)... [Isoform 2]: Isoform 2 probably lacks enzyme activity..., [Isoform 3]: Isoform 3 probably lacks enzyme activity..

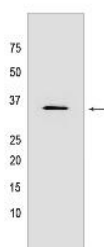
Introduction: **WB:** Western Blot **IP:** Immunoprecipitation **IHC:** Immunohistochemistry **ChIP:** Chromatin Immunoprecipitation **ICC/IF:** Immunocytochemistry/Immunofluorescence **F:** Flow Cytometry

Cross Reactivity: **H:** human **M:** mouse **R:** rat **Hm:** hamster **Mk:** monkey **Vir:** virus **Ml:** mink **C:** chicken **Dm** D. melanogaster **X:** Xenopus **Z:** zebrafish **B:** bovine **Dg:** dog **Pg:** pig **Hr:** horse

For Research Use Only. Not For Use In Diagnostic Procedures.

Validation Data:

PHYHD1 Rabbit mAb [2I09] Images



Western blot (SDS PAGE) analysis of extracts from Human fetal liver tissue lyaste.using PHYHD1 Rabbit mAb [2I09] at dilution of 1:1000 incubated at 4°C over night

View more information on <http://naturebios.com>

IMPORTANT: For western blots, incubate membrane with diluted primary antibody in 1% w/v Milk, 1X TBST at 4°C overnight.