

CETP Rabbit mAb [9RJ2]

Cat NO. :A76179

Information:

Applications	Reactivity:	UniProt ID:	MW(kDa)	Host	Isotype	Size
WB	H	P11597	55 kDa	Rabbit	IgG	100ul,200ul

Applications detail:

Application	Dilution
WB	1:1000-2000
The optimal dilutions should be determined by the end user	

Conjugate:

UnConjugate

Form:

Liquid

sensitivity:

Endogenous

Purification:

Protein A purification

Specificity:

Antibody is produced by immunizing animals with a synthetic peptide of Human CETP.

Storage buffer and conditions :

Antibody store in 10 mM PBS, 0.5mg/ml BSA, 50% glycerol (buffer) .

Shipped at 4°C. Store at -20°C or -80°C.

Products are valid for one natural year of receipt.Avoid repeated freeze / thaw cycles.

Tissue specificity:

Expressed by the liver and secreted in plasma..

Subcellular location:

Secreted.

Function:

Involved in the transfer of neutral lipids, including cholesteryl ester and triglyceride, among lipoprotein particles. Allows the net movement of cholesteryl ester from high density lipoproteins/HDL to triglyceride-rich very low density lipoproteins/VLDL, and the equimolar transport of triglyceride from VLDL to HDL (PubMed:3600759, PubMed:24293641, PubMed:3281933). Regulates the reverse cholesterol transport, by which excess cholesterol is removed from peripheral tissues and returned to the liver for elimination (PubMed:17237796)..

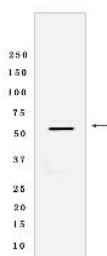
Introduction: **WB:** Western Blot **IP:** Immunoprecipitation **IHC:** Immunohistochemistry **ChIP:** Chromatin Immunoprecipitation **ICC/IF:** Immunocytochemistry/Immunofluorescence **F:** Flow Cytometry

Cross Reactivity: **H:** human **M:** mouse **R:** rat **Hm:** hamster **Mk:** monkey **Vir:** virus **Ml:** mink **C:** chicken **Dm** D. melanogaster **X:** Xenopus **Z:** zebrafish **B:** bovine **Dg:** dog **Pg:** pig **Hr:** horse

For Research Use Only. Not For Use In Diagnostic Procedures.

Validation Data:

CETP Rabbit mAb [9RJ2] Images



Western blot (SDS PAGE) analysis of extracts from Recombinant protein .using CETP Rabbit mAb [9RJ2] at dilution of 1:1000 incubated at 4°C over night

View more information on <http://naturebios.com>

IMPORTANT: For western blots, incubate membrane with diluted primary antibody in 1% w/v Milk, 1X TBST at 4°C overnight.