

ARL13B Mouse mAb[7XD7]

Cat NO. :A80004

Information:

Applications	Reactivity:	UniProt ID:	MW(kDa)	Host	Isotype	Size
WB,ICC/IF	H,M,Canine	Q3SXY8	60kDa	Mouse	IgG	100ul,200ul

Applications detail:

Application	Dilution
WB	1:1000-2000
ICC/IF	1:100
The optimal dilutions should be determined by the end user	

Conjugate:

UnConjugate

Form:

Liquid

sensitivity:

Endogenous

Purification:

Protein A purification

Specificity:

Antibody is produced by immunizing animals with a synthetic peptide of human ARL13B.

Storage buffer and conditions:

Antibody store in 10 mM PBS, 0.5mg/ml BSA, 50% glycerol (buffer) .

Shipped at 4°C. Store at-20°C or -80°C.

Products are valid for one natural year of receipt.Avoid repeated freeze / thaw cycles.

Tissue specificity:

Expressed in the developing brain..

Subcellular location:

Cell projection, cilium membrane,Lipid-anchor. Cell projection, cilium.

Function:

Cilium-specific protein required to control the microtubule-based, ciliary axoneme structure. May act by maintaining the association between IFT subcomplexes A and B. Binds GTP but is not able to hydrolyze it,the GTPase activity remains unclear. Required to pattern the neural tube. Involved in cerebral cortex development: required for the initial formation of a polarized radial glial scaffold, the first step in the construction of the cerebral cortex, by regulating ciliary signaling. Regulates the migration and placement of postmitotic interneurons in the developing cerebral cortex. May regulate endocytic recycling traffic,however, additional evidence is required to confirm these data..

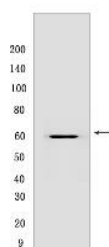
Introduction: **WB:** Western Blot **IP:** Immunoprecipitation **IHC:** Immunohistochemistry **ChIP:** Chromatin Immunoprecipitation **ICC/IF:** Immunocytochemistry/Immunofluorescence **F:** Flow Cytometry

Cross Reactivity: **H:** human **M:** mouse **R:** rat **Hm:** hamster **Mk:** monkey **Vir:** virus **Ml:** mink **C:** chicken **Dm** D. melanogaster **X:** Xenopus **Z:** zebrafish **B:** bovine **Dg:** dog **Pg:** pig **Hr:** horse

For Research Use Only. Not For Use In Diagnostic Procedures.

Validation Data:

ARL13B Mouse mAb[7XD7] Images



Western blot (SDS PAGE) analysis of extracts from HepG2 cells. Using ARL13B Mouse mAb IgG [7XD7] at dilution of 1:1000 incubated at 4°C over night.

View more information on <http://naturebios.com>

IMPORTANT: For western blots, incubate membrane with diluted primary antibody in 1% w/v Milk, 1X TBST at 4°C overnight.