

**BNP Rabbit mAb [08MU]**

**Cat NO. :A80692**

**Information:**

Applications	Reactivity:	UniProt ID:	MW(kDa)	Host	Isotype	Size
WB,ICC/IF	H	P16860	30 kda	Rabbit	IgG	100ul,200ul

**Applications detail:**

Application	Dilution
WB	1:1000-2000
ICC/IF	1:100,
The optimal dilutions should be determined by the end user	

**Conjugate:**

UnConjugate

**Form:**

Liquid

**sensitivity:**

Endogenous

**Purification:**

Protein A purification

**Specificity:**

Antibody is produced by immunizing animals with a synthetic peptide of Human BNP.

**Storage buffer and conditions:**

Antibody store in 10 mM PBS, 0.5mg/ml BSA, 50% glycerol (buffer) .

Shipped at 4°C. Store at -20°C or -80°C.

Products are valid for one natural year of receipt.Avoid repeated freeze / thaw cycles.

**Tissue specificity:**

[Brain natriuretic peptide 32]: Detected in the cardiac atria (at protein level) (PubMed:2138890, PubMed:2136732).

Detected in the kidney distal tubular cells (at protein level) (PubMed:9794555)..

**Subcellular location:**

[NT-proBNP]: Secreted.

**Function:**

**Introduction:** **WB:** Western Blot **IP:** Immunoprecipitation **IHC:** Immunohistochemistry **ChIP:** Chromatin Immunoprecipitation **ICC/IF:** Immunocytochemistry/Immunofluorescence **F:** Flow Cytometry

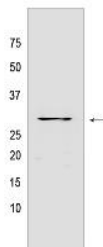
**Cross Reactivity:** **H:** human **M:** mouse **R:** rat **Hm:** hamster **Mk:** monkey **Vir:** virus **Ml:** mink **C:** chicken **Dm** D. melanogaster **X:** Xenopus **Z:** zebrafish **B:** bovine **Dg:** dog **Pg:** pig **Hr:** horse

**For Research Use Only. Not For Use In Diagnostic Procedures.**

[Brain natriuretic peptide 32]: Cardiac hormone that plays a key role in mediating cardio-renal homeostasis (PubMed:9458824, PubMed:1672777, PubMed:1914098, PubMed:17372040). May also function as a paracrine antifibrotic factor in the heart (By similarity). Acts by specifically binding and stimulating NPR1 to produce cGMP, which in turn activates effector proteins that drive various biological responses (PubMed:9458824, PubMed:1672777, PubMed:17372040, PubMed:21098034, PubMed:17349887, PubMed:25339504). Involved in regulating the extracellular fluid volume and maintaining the fluid-electrolyte balance through natriuresis, diuresis, vasorelaxation, and inhibition of renin and aldosterone secretion (PubMed:9458824, PubMed:1914098). Binds the clearance receptor NPR3 (PubMed:16870210)... [NT-proBNP]: May affect cardio-renal homeostasis (PubMed:17372040). Able to promote the production of cGMP although its potency is very low compared to brain natriuretic peptide 32 (PubMed:17372040)... [BNP(3-32)]: May have a role in cardio-renal homeostasis (PubMed:17372040). Able to promote the production of cGMP (PubMed:17372040)..

## Validation Data:

### BNP Rabbit mAb [08MU] Images



Western blot (SDS PAGE) analysis of extracts from Human plasma tissue lyaste.using BNP Rabbit mAb [08MU] at dilution of 1:1000 incubated at 4°C over night

View more information on <http://naturebios.com>

**IMPORTANT:** For western blots, incubate membrane with diluted primary antibody in 1% w/v Milk, 1X TBST at 4°C overnight.