

**SCG10 Rabbit mAb [RT52]**

**Cat NO. :A81374**

**Information:**

Applications	Reactivity:	UniProt ID:	MW(kDa)	Host	Isotype	Size
WB	H,R	Q93045	21 kDa	Rabbit	IgG	50ul,100ul,200ul

**Applications detail:**

Application	Dilution
WB	1:1000-2000
The optimal dilutions should be determined by the end user	

**Conjugate:**

UnConjugate

**Form:**

Liquid

**sensitivity:**

Endogenous

**Purification:**

Protein A purification

**Specificity:**

Antibody is produced by immunizing animals with a synthetic peptide of Human SCG10.

**Storage buffer and conditions:**

Antibody store in 10 mM PBS, 0.5mg/ml BSA, 50% glycerol (buffer) .

Shipped at 4°C. Store at -20°C or -80°C.

Products are valid for one natural year of receipt.Avoid repeated freeze / thaw cycles.

**Tissue specificity:**

Neuron specific.

**Subcellular location:**

Cytoplasm. Cytoplasm, perinuclear region. Cell projection, growth cone. Membrane,Peripheral membrane protein,Cytoplasmic side. Cell projection, axon. Golgi apparatus. Endosome. Cell projection,

**Function:**

**Introduction:** **WB:** Western Blot **IP:** Immunoprecipitation **IHC:** Immunohistochemistry **ChIP:** Chromatin Immunoprecipitation **ICC/IF:** Immunocytochemistry/Immunofluorescence **F:** Flow Cytometry

**Cross Reactivity:** **H:** human **M:** mouse **R:** rat **Hm:** hamster **Mk:** monkey **Vir:** virus **Ml:** mink **C:** chicken **Dm** D. melanogaster **X:** Xenopus **Z:** zebrafish **B:** bovine **Dg:** dog **Pg:** pig **Hr:** horse

**For Research Use Only. Not For Use In Diagnostic Procedures.**

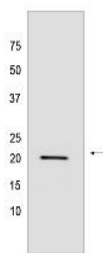
---

Regulator of microtubule stability. When phosphorylated by MAPK8, stabilizes microtubules and consequently controls neurite length in cortical neurons. In the developing brain, negatively regulates the rate of exit from multipolar stage and retards radial migration from the ventricular zone (By similarity)..

## Validation Data:

### SCG10 Rabbit mAb [RT52] Images

---



Western blot (SDS PAGE) analysis of extracts from Human fetal brain tissue lyaste.using SCG10 Rabbit mAb [RT52] at dilution of 1:1000 incubated at 4°C over night

View more information on <http://naturebios.com>

**IMPORTANT:** For western blots, incubate membrane with diluted primary antibody in 1% w/v Milk, 1X TBST at 4°C overnight.