

Fibulin-4 Rabbit mAb [01U5]

Cat NO. :A82600

Information:

Applications	Reactivity:	UniProt ID:	MW(kDa)	Host	Isotype	Size
WB,IHC	H,M	O95967	49 kDa	Rabbit	IgG	100ul,200ul

Applications detail:

Application	Dilution
WB	1:1000-2000
IHC	1:100,
The optimal dilutions should be determined by the end user	

Conjugate:

UnConjugate

Form:

Liquid

sensitivity:

Endogenous

Purification:

Protein A purification

Specificity:

Antibody is produced by immunizing animals with a synthetic peptide of Human Fibulin-4.

Storage buffer and conditions:

Antibody store in 10 mM PBS, 0.5mg/ml BSA, 50% glycerol (buffer) .

Shipped at 4°C. Store at -20°C or -80°C.

Products are valid for one natural year of receipt.Avoid repeated freeze / thaw cycles.

Tissue specificity:

Subcellular location:

Secreted, extracellular space, extracellular matrix. Secreted, extracellular space, extracellular matrix, basement membrane.

Function:

Introduction: **WB:** Western Blot **IP:** Immunoprecipitation **IHC:** Immunohistochemistry **ChIP:** Chromatin Immunoprecipitation **ICC/IF:** Immunocytochemistry/Immunofluorescence **F:** Flow Cytometry

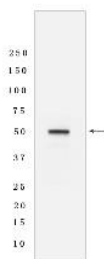
Cross Reactivity: **H:** human **M:** mouse **R:** rat **Hm:** hamster **Mk:** monkey **Vir:** virus **Ml:** mink **C:** chicken **Dm** D. melanogaster **X:** Xenopus **Z:** zebrafish **B:** bovine **Dg:** dog **Pg:** pig **Hr:** horse

For Research Use Only. Not For Use In Diagnostic Procedures.

Plays a crucial role in elastic fiber formation in tissue, and in the formation of ultrastructural connections between elastic laminae and smooth muscle cells in the aorta, therefore participates in terminal differentiation and maturation of smooth muscle cell (SMC) and in the mechanical properties and wall integrity maintenance of the aorta (PubMed:27339457). In addition, is involved in the control of collagen fibril assembly in tissue through proteolytic activation of LOX leading to cross-linking of collagen and elastin (By similarity). Also promotes ELN coacervation and participates in the deposition of ELN coacervates on to microfibrils but also regulates ELN cross-linking through LOX interaction (PubMed:18973305, PubMed:19570982). Moreover adheres to the cells through heparin binding in a calcium-dependent manner and regulates vascular smooth muscle cells proliferation through angiotensin signaling (PubMed:23782690)..

Validation Data:

Fibulin-4 Rabbit mAb [01U5] Images



Western blot (SDS PAGE) analysis of extracts from JAR cells lysates using Fibulin-4 Rabbit mAb [01U5] at dilution of 1:1000 incubated at 4°C overnight

View more information on <http://naturebios.com>

IMPORTANT: For western blots, incubate membrane with diluted primary antibody in 1% w/v Milk, 1X TBST at 4°C overnight.