

Rab1A Rabbit mAb [4O35]

Cat NO. :A86275

Information:

Applications	Reactivity:	UniProt ID:	MW(kDa)	Host	Isotype	Size
WB	H,M,R	P62820	22 kDa	Rabbit	IgG	100ul,200ul

Applications detail:

Application	Dilution
WB	1:1000-2000
The optimal dilutions should be determined by the end user	

Conjugate:

UnConjugate

Form:

Liquid

sensitivity:

Endogenous

Purification:

Protein A purification

Specificity:

Antibody is produced by immunizing animals with a synthetic peptide at the sequence of Human Rab1A

Storage buffer and conditions:

Antibody store in 10 mM PBS, 0.5mg/ml BSA, 50% glycerol (buffer) .

Shipped at 4°C. Store at -20°C or -80°C.

Products are valid for one natural year of receipt. Avoid repeated freeze / thaw cycles.

Tissue specificity:

Subcellular location:

Golgi apparatus. Endoplasmic reticulum. Early endosome. Cytoplasm, cytosol. Membrane. Melanosome.

Function:

The small GTPases Rab are key regulators of intracellular membrane trafficking, from the formation of transport vesicles to their fusion with membranes (PubMed:20639577, PubMed:20861236, PubMed:21303926, PubMed:22939626). Rabs cycle between an inactive GDP-bound form and an active GTP-bound form that is able to recruit to membranes different sets of downstream effectors directly responsible for vesicle formation, movement, tethering and fusion (PubMed:20639577, PubMed:20861236, PubMed:21303926, PubMed:22939626). RAB1A regulates vesicular protein transport from the endoplasmic reticulum (ER) to the Golgi compartment and on to the cell surface, and plays a role in IL-8 and growth hormone secretion (PubMed:21303926). Required to

Introduction: **WB:** Western Blot **IP:** Immunoprecipitation **IHC:** Immunohistochemistry **ChIP:** Chromatin Immunoprecipitation **ICC/IF:** Immunocytochemistry/Immunofluorescence **F:** Flow Cytometry

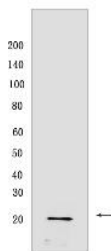
Cross Reactivity: **H:** human **M:** mouse **R:** rat **Hm:** hamster **Mk:** monkey **Vir:** virus **Ml:** mink **C:** chicken **Dm** D. melanogaster **X:** Xenopus **Z:** zebrafish **B:** bovine **Dg:** dog **Pg:** pig **Hr:** horse

For Research Use Only. Not For Use In Diagnostic Procedures.

modulate the compacted morphology of the Golgi (PubMed:26209634). Regulates the level of CASR present at the cell membrane (PubMed:20861236). Plays a role in cell adhesion and cell migration, via its role in protein trafficking (PubMed:20639577). Plays a role in autophagosome assembly and cellular defense reactions against pathogenic bacteria (PubMed:22939626). Plays a role in microtubule-dependent protein transport by early endosomes and in anterograde melanosome transport (By similarity)..

Validation Data:

Rab1A Rabbit mAb [4O35] Images



Western blot (SDS PAGE) analysis of extracts from C1C12 cells. Using Rab1A Rabbit mAb [4O35] at dilution of 1:1000 incubated at 4°C over night.

View more information on <http://naturebios.com>

IMPORTANT: For western blots, incubate membrane with diluted primary antibody in 1% w/v Milk, 1X TBST at 4°C overnight.