

**ARL2 Rabbit mAb [EO90]**

**Cat NO. :A86701**

**Information:**

Applications	Reactivity:	UniProt ID:	MW(kDa)	Host	Isotype	Size
WB, ICC/IF	H	P36404	19 kda	Rabbit	IgG	100ul, 200ul

**Applications detail:**

Application	Dilution
WB	1:1000-2000
ICC/IF	1:100,
The optimal dilutions should be determined by the end user	

**Conjugate:**

UnConjugate

**Form:**

Liquid

**sensitivity:**

Endogenous

**Purification:**

Protein A purification

**Specificity:**

Antibody is produced by immunizing animals with a synthetic peptide of Human ARL2.

**Storage buffer and conditions:**

Antibody store in 10 mM PBS, 0.5mg/ml BSA, 50% glycerol (buffer) .

Shipped at 4°C. Store at -20°C or -80°C.

Products are valid for one natural year of receipt. Avoid repeated freeze / thaw cycles.

**Tissue specificity:**

**Subcellular location:**

Mitochondrion intermembrane space. Cytoplasm, cytoskeleton, microtubule organizing center, centrosome.

Nucleus. Cytoplasm.

**Function:**

**Introduction:** **WB:** Western Blot **IP:** Immunoprecipitation **IHC:** Immunohistochemistry **ChIP:** Chromatin Immunoprecipitation **ICC/IF:** Immunocytochemistry/ Immunofluorescence **F:** Flow Cytometry

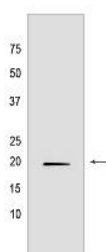
**Cross Reactivity:** **H:** human **M:** mouse **R:** rat **Hm:** hamster **Mk:** monkey **Vir:** virus **Ml:** mink **C:** chicken **Dm** D. melanogaster **X:** Xenopus **Z:** zebrafish **B:** bovine **Dg:** dog **Pg:** pig **Hr:** horse

**For Research Use Only. Not For Use In Diagnostic Procedures.**

Small GTP-binding protein which cycles between an inactive GDP-bound and an active GTP-bound form, and the rate of cycling is regulated by guanine nucleotide exchange factors (GEF) and GTPase-activating proteins (GAP). GTP-binding protein that does not act as an allosteric activator of the cholera toxin catalytic subunit. Regulates formation of new microtubules and centrosome integrity. Prevents the TBCD-induced microtubule destruction. Participates in association with TBCD, in the disassembly of the apical junction complexes. Antagonizes the effect of TBCD on epithelial cell detachment and tight and adherens junctions disassembly. Together with ARL2, plays a role in the nuclear translocation, retention and transcriptional activity of STAT3. Component of a regulated secretory pathway involved in Ca(2+)-dependent release of acetylcholine. Required for normal progress through the cell cycle (PubMed:10831612, PubMed:16525022, PubMed:18234692, PubMed:18588884, PubMed:20740604). Also regulates mitochondrial integrity and function (PubMed:30945270)..

## Validation Data:

### ARL2 Rabbit mAb [EO90] Images



Western blot (SDS PAGE) analysis of extracts from T47D cells lysates using ARL2 Rabbit mAb [EO90] at dilution of 1:1000 incubated at 4°C overnight

View more information on <http://naturebios.com>

**IMPORTANT:** For western blots, incubate membrane with diluted primary antibody in 1% w/v Milk, 1X TBST at 4°C overnight.