

**Glucose Transporter 8 Rabbit mAb [AM4B]**

**Cat NO. :A89384**

**Information:**

Applications	Reactivity:	UniProt ID:	MW(kDa)	Host	Isotype	Size
WB	H,M,R	Q9NY64	38 kda	Rabbit	IgG	100ul,200ul

**Applications detail:**

Application	Dilution
WB	1:1000-2000
The optimal dilutions should be determined by the end user	

**Conjugate:**

UnConjugate

**Form:**

Liquid

**sensitivity:**

Endogenous

**Purification:**

Protein A purification

**Specificity:**

Antibody is produced by immunizing animals with a synthetic peptide of Human Glucose Transporter 8.

**Storage buffer and conditions:**

Antibody store in 10 mM PBS, 0.5mg/ml BSA, 50% glycerol (buffer) .

Shipped at 4°C. Store at-20°C or -80°C.

Products are valid for one natural year of receipt.Avoid repeated freeze / thaw cycles.

**Tissue specificity:**

Highly expressed in testis, but not in testicular carcinoma. Lower amounts present in most other tissues..

**Subcellular location:**

Cell membrane,Multi-pass membrane protein. Cytoplasmic vesicle membrane,Multi-pass membrane protein.

**Function:**

Insulin-regulated facilitative hexose transporter that mediates the transport of glucose and fructose. Also able to mediate the transport of dehydroascorbate..

**Introduction:** **WB:** Western Blot **IP:** Immunoprecipitation **IHC:** Immunohistochemistry **ChIP:** Chromatin Immunoprecipitation **ICC/IF:** Immunocytochemistry/Immunofluorescence **F:** Flow Cytometry

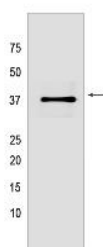
**Cross Reactivity:** **H:** human **M:** mouse **R:** rat **Hm:** hamster **Mk:** monkey **Vir:** virus **Ml:** mink **C:** chicken **Dm** D. melanogaster **X:** Xenopus **Z:** zebrafish **B:** bovine **Dg:** dog **Pg:** pig **Hr:** horse

**For Research Use Only. Not For Use In Diagnostic Procedures.**

## Validation Data:

### Glucose Transporter 8 Rabbit mAb [AM4B] Images

---



Western blot (SDS PAGE) analysis of extracts from Human cerebellum tissue lyaste.using Glucose Transporter 8 Rabbit mAb [AM4B] at dilution of 1:1000

View more information on <http://naturebios.com>

**IMPORTANT:** For western blots, incubate membrane with diluted primary antibody in 1% w/v Milk, 1X TBST at 4°C overnight.