

GUK1 Mouse mAb[L13Z]

Cat NO. :A91089

Information:

Applications	Reactivity:	UniProt ID:	MW(kDa)	Host	Isotype	Size
WB,IHC,ICC/IF	H,M,R	Q16774	22kda	Mouse	IgG	100ul,200ul

Applications detail:

Application	Dilution
WB	1:1000-2000
IHC	1:100
ICC/IF	1:100
The optimal dilutions should be determined by the end user	

Conjugate:

UnConjugate

Form:

Liquid

sensitivity:

Endogenous

Purification:

Protein A purification

Specificity:

Antibody is produced by immunizing animals with a synthetic peptide of human GUK1.

Storage buffer and conditions:

Antibody store in 10 mM PBS, 0.5mg/ml BSA, 50% glycerol (buffer) .

Shipped at 4°C. Store at-20°C or -80°C.

Products are valid for one natural year of receipt.Avoid repeated freeze / thaw cycles.

Tissue specificity:

Widely expressed..

Subcellular location:

Photoreceptor inner segment. Cytoplasm, cytosol.

Function:

Catalyzes the phosphorylation of GMP to GDP. Essential enzyme for recycling GMP and indirectly, cyclic GMP (cGMP) (PubMed:31201273). Involved in the cGMP metabolism in photoreceptors (By similarity). It may also have a role in the survival and growth progression of some tumors (PubMed:31201273). In addition to its physiological role, GUK1 is essential for convert prodrugs used for the treatment of cancers and viral infections into their pharmacologically active metabolites, most notably acyclovir, ganciclovir, and 6-thioguanine and its closely related analog 6-mercaptopurine (PubMed:197968, PubMed:6248551, PubMed:6306664)..

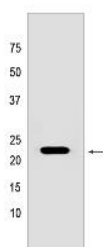
Introduction: **WB:** Western Blot **IP:** Immunoprecipitation **IHC:** Immunohistochemistry **ChIP:** Chromatin Immunoprecipitation **ICC/IF:** Immunocytochemistry/Immunofluorescence **F:** Flow Cytometry

Cross Reactivity: **H:** human **M:** mouse **R:** rat **Hm:** hamster **Mk:** monkey **Vir:** virus **Ml:** mink **C:** chicken **Dm** D. melanogaster **X:** Xenopus **Z:** zebrafish **B:** bovine **Dg:** dog **Pg:** pig **Hr:** horse

For Research Use Only. Not For Use In Diagnostic Procedures.

Validation Data:

GUK1 Mouse mAb[L13Z] Images



Western blot (SDS PAGE) analysis of extracts from Jurkat cells. Using GUK1 Mouse mAb IgG [L13Z] at dilution of 1:1000 incubated at 4°C over night.

View more information on <http://naturebios.com>

IMPORTANT: For western blots, incubate membrane with diluted primary antibody in 1% w/v Milk, 1X TBST at 4°C overnight.