

Geminin Rabbit mAb [J9Q2]

Cat NO. :A91315

Information:

Applications	Reactivity:	UniProt ID:	MW(kDa)	Host	Isotype	Size
WB,IHC,ICC/IF	H	O75496	23 kDa	Rabbit	IgG	100ul,200ul

Applications detail:

Application	Dilution
WB	1:1000-2000
IHC	1:100
ICC/IF	1:100
The optimal dilutions should be determined by the end user	

Conjugate:

UnConjugate

Form:

Liquid

sensitivity:

Endogenous

Purification:

Protein A purification

Specificity:

Antibody is produced by immunizing animals with a synthetic peptide at the sequence of human Geminin

Storage buffer and conditions:

Antibody store in 10 mM PBS, 0.5mg/ml BSA, 50% glycerol (buffer) .

Shipped at 4°C. Store at -20°C or -80°C.

Products are valid for one natural year of receipt.Avoid repeated freeze / thaw cycles.

Tissue specificity:

Subcellular location:

Cytoplasm. Nucleus.

Function:

Inhibits DNA replication by preventing the incorporation of MCM complex into pre-replication complex (pre-RC) (PubMed:9635433, PubMed:14993212, PubMed:20129055, PubMed:24064211). It is degraded during the mitotic phase of the cell cycle (PubMed:9635433, PubMed:14993212, PubMed:24064211). Its destruction at the metaphase-anaphase transition permits replication in the succeeding cell cycle (PubMed:9635433, PubMed:14993212, PubMed:24064211). Inhibits histone acetyltransferase activity of KAT7/HBO1 in a CDT1-dependent manner, inhibiting histone H4 acetylation and DNA replication licensing (PubMed:20129055). Inhibits

Introduction: **WB:** Western Blot **IP:** Immunoprecipitation **IHC:** Immunohistochemistry **ChIP:** Chromatin Immunoprecipitation **ICC/IF:** Immunocytochemistry/Immunofluorescence **F:** Flow Cytometry

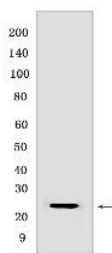
Cross Reactivity: **H:** human **M:** mouse **R:** rat **Hm:** hamster **Mk:** monkey **Vir:** virus **Ml:** mink **C:** chicken **Dm** D. melanogaster **X:** Xenopus **Z:** zebrafish **B:** bovine **Dg:** dog **Pg:** pig **Hr:** horse

For Research Use Only. Not For Use In Diagnostic Procedures.

the transcriptional activity of a subset of Hox proteins, enrolling them in cell proliferative control
(PubMed:22615398)..

Validation Data:

Geminin Rabbit mAb [J9Q2] Images



Western blot (SDS PAGE) analysis of extracts from
HepG2 cells. Using GemininRabbit mAb [J9Q2] at dilution
of 1:1000 incubated at 4°C over night.

View more information on <http://naturebios.com>

IMPORTANT: For western blots, incubate membrane with diluted primary antibody in 1% w/v Milk, 1X TBST at 4°C overnight.

For Research Use Only. Not For Use In Diagnostic Procedures.