

**NEK6 Rabbit mAb [JRI5]**

**Cat NO. :A91685**

**Information:**

Applications	Reactivity:	UniProt ID:	MW(kDa)	Host	Isotype	Size
WB	H	Q9HC98	36 kDa	Rabbit	IgG	100ul,200ul

**Applications detail:**

Application	Dilution
WB	1:1000-2000
The optimal dilutions should be determined by the end user	

**Conjugate:**

UnConjugate

**Form:**

Liquid

**sensitivity:**

Endogenous

**Purification:**

Protein A purification

**Specificity:**

Antibody is produced by immunizing animals with a synthetic peptide at the sequence of human NEK6

**Storage buffer and conditions:**

Antibody store in 10 mM PBS, 0.5mg/ml BSA, 50% glycerol (buffer) .

Shipped at 4°C. Store at -20°C or -80°C.

Products are valid for one natural year of receipt.Avoid repeated freeze / thaw cycles.

**Tissue specificity:**

Ubiquitous, with highest expression in heart and skeletal muscle..

**Subcellular location:**

Cytoplasm. Nucleus. Nucleus speckle. Cytoplasm, cytoskeleton, microtubule organizing center, centrosome.

Cytoplasm, cytoskeleton, spindle pole.

**Function:**

**Introduction:** **WB:** Western Blot **IP:** Immunoprecipitation **IHC:** Immunohistochemistry **ChIP:** Chromatin Immunoprecipitation **ICC/IF:** Immunocytochemistry/Immunofluorescence **F:** Flow Cytometry

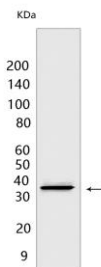
**Cross Reactivity:** **H:** human **M:** mouse **R:** rat **Hm:** hamster **Mk:** monkey **Vir:** virus **Ml:** mink **C:** chicken **Dm** D. melanogaster **X:** Xenopus **Z:** zebrafish **B:** bovine **Dg:** dog **Pg:** pig **Hr:** horse

**For Research Use Only. Not For Use In Diagnostic Procedures.**

Protein kinase which plays an important role in mitotic cell cycle progression (PubMed:14563848). Required for chromosome segregation at metaphase-anaphase transition, robust mitotic spindle formation and cytokinesis (PubMed:19414596). Phosphorylates ATF4, CIR1, PTN, RAD26L, RBBP6, RPS7, RPS6KB1, TRIP4, STAT3 and histones H1 and H3 (PubMed:12054534, PubMed:20873783). Phosphorylates KIF11 to promote mitotic spindle formation (PubMed:19001501). Involved in G2/M phase cell cycle arrest induced by DNA damage (PubMed:18728393). Inhibition of activity results in apoptosis. May contribute to tumorigenesis by suppressing p53/TP53-induced cancer cell senescence (PubMed:21099361). Phosphorylates EML4 at 'Ser-144', promoting its dissociation from microtubules during mitosis which is required for efficient chromosome congression (PubMed:31409757)..

## Validation Data:

### NEK6 Rabbit mAb [JRI5] Images



Western blot (SDS PAGE) analysis of extracts from HepG2 cells. Using NEK6 Rabbit mAb [JRI5] at dilution of 1:1000 incubated at 4°C over night.

View more information on <http://naturebios.com>

**IMPORTANT:** For western blots, incubate membrane with diluted primary antibody in 1% w/v Milk, 1X TBST at 4°C overnight.