

SYN4 Rabbit mAb [BNH9]

Cat NO. :A93339

Information:

Applications	Reactivity:	UniProt ID:	MW(kDa)	Host	Isotype	Size
WB	H,M,R	Q9NSN8	50 kDa	Rabbit	IgG	100ul,200ul

Applications detail:

Application	Dilution
WB	1:1000-2000
The optimal dilutions should be determined by the end user	

Conjugate:

UnConjugate

Form:

Liquid

sensitivity:

Endogenous

Purification:

Protein A purification

Specificity:

Antibody is produced by immunizing animals with a synthetic peptide of Human SYN4.

Storage buffer and conditions:

Antibody store in 10 mM PBS, 0.5mg/ml BSA, 50% glycerol (buffer) .

Shipped at 4°C. Store at -20°C or -80°C.

Products are valid for one natural year of receipt.Avoid repeated freeze / thaw cycles.

Tissue specificity:

Brain specific. In CNS, it is expressed in the perikaryon and proximal portion of the neuronal processes. Strong expression in the hippocampus, neuron-rich dentate granule cells, and pyramidal cell

Subcellular location:

Cytoplasm, cytoskeleton. Nucleus.

Function:

Introduction: **WB:** Western Blot **IP:** Immunoprecipitation **IHC:** Immunohistochemistry **ChIP:** Chromatin Immunoprecipitation **ICC/IF:** Immunocytochemistry/Immunofluorescence **F:** Flow Cytometry

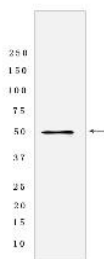
Cross Reactivity: **H:** human **M:** mouse **R:** rat **Hm:** hamster **Mk:** monkey **Vir:** virus **Ml:** mink **C:** chicken **Dm** D. melanogaster **X:** Xenopus **Z:** zebrafish **B:** bovine **Dg:** dog **Pg:** pig **Hr:** horse

For Research Use Only. Not For Use In Diagnostic Procedures.

Adapter protein that binds to and probably organizes the subcellular localization of a variety of proteins. May link various receptors to the actin cytoskeleton and the dystrophin glycoprotein complex (By similarity). May participate in regulating the subcellular location of diacylglycerol kinase-zeta to ensure that diacylglycerol is rapidly inactivated following receptor activation..

Validation Data:

SYN4 Rabbit mAb [BNH9] Images



Western blot (SDS PAGE) analysis of extracts from
Mouse brain tissue lysate using SYN4 Rabbit mAb [BNH9]
at dilution of 1:1000 incubated at 4°C over night

View more information on <http://naturebios.com>

IMPORTANT: For western blots, incubate membrane with diluted primary antibody in 1% w/v Milk, 1X TBST at 4°C overnight.