

BID Mouse mAb[22L4]

Cat NO. :A95092

Information:

Applications	Reactivity:	UniProt ID:	MW(kDa)	Host	Isotype	Size
WB,IHC,ICC/IF	H	P55957	22kDa	Mouse	IgG	100ul,200ul

Applications detail:

Application	Dilution
WB	1:1000-2000
IHC	1:100
ICC/IF	1:100
The optimal dilutions should be determined by the end user	

Conjugate:

UnConjugate

Form:

Liquid

sensitivity:

Endogenous

Purification:

Protein A purification

Specificity:

Antibody is produced by immunizing animals with a synthetic peptide of human BID.

Storage buffer and conditions:

Antibody store in 10 mM PBS, 0.5mg/ml BSA, 50% glycerol (buffer) .

Shipped at 4°C. Store at -20°C or -80°C.

Products are valid for one natural year of receipt.Avoid repeated freeze / thaw cycles.

Tissue specificity:

[Isoform 2]: Expressed in spleen, pancreas and placenta (at protein level)...[Isoform 3]: Expressed in lung, pancreas and spleen (at protein level)...[Isoform 4]: Expressed in lung and pancreas (at

Subcellular location:

Cytoplasm. Mitochondrion membrane. Mitochondrion outer membrane.

Function:

Introduction: **WB:** Western Blot **IP:** Immunoprecipitation **IHC:** Immunohistochemistry **ChIP:** Chromatin Immunoprecipitation **ICC/IF:** Immunocytochemistry/Immunofluorescence **F:** Flow Cytometry

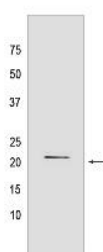
Cross Reactivity: **H:** human **M:** mouse **R:** rat **Hm:** hamster **Mk:** monkey **Vir:** virus **Ml:** mink **C:** chicken **Dm** D. melanogaster **X:** Xenopus **Z:** zebrafish **B:** bovine **Dg:** dog **Pg:** pig **Hr:** horse

For Research Use Only. Not For Use In Diagnostic Procedures.

Induces caspases and apoptosis (PubMed:14583606). Counters the protective effect of BCL2 (By similarity)..., [BH3-interacting domain death agonist p15]: Induces caspase activation and apoptosis (PubMed:15661737, PubMed:32029622). Allows the release of cytochrome c (PubMed:32029622)..., [Isoform 1]: Induces ICE-like proteases and apoptosis..., [Isoform 2]: Induces ICE-like proteases and apoptosis..., [Isoform 3]: Does not induce apoptosis..., [Isoform 4]: Induces ICE-like proteases and apoptosis..

Validation Data:

BID Mouse mAb[22L4] Images



Western blot (SDS PAGE) analysis of extracts from HeLa cells. Using BID Mouse mAb IgG [22L4] at dilution of 1:1000 incubated at 4°C over night.

View more information on <http://naturebios.com>

IMPORTANT: For western blots, incubate membrane with diluted primary antibody in 1% w/v Milk, 1X TBST at 4°C overnight.