

LIPG Mouse mAb[1918]

Cat NO. :A95660

Information:

Applications	Reactivity:	UniProt ID:	MW(kDa)	Host	Isotype	Size
WB,IHC	H	Q9Y5X9	57and42kDa	Mouse	IgG	100ul,200ul

Applications detail:

Application	Dilution
WB	1:1000-2000
IHC	1:100
The optimal dilutions should be determined by the end user	

Conjugate:

UnConjugate

Form:

Liquid

sensitivity:

Endogenous

Purification:

Protein A purification

Specificity:

Antibody is produced by immunizing animals with a synthetic peptide of human LIPG.

Storage buffer and conditions :

Antibody store in 10 mM PBS, 0.5mg/ml BSA, 50% glycerol (buffer) .

Shipped at 4°C. Store at -20°C or -80°C.

Products are valid for one natural year of receipt.Avoid repeated freeze / thaw cycles.

Tissue specificity:

High level of expression in the liver, placenta, lung, thyroid, kidney, testis and in the corpus luteum of the ovary.

Expressed also in coronary artery endothelial cells, umbilical vein endothelial

Subcellular location:

Secreted.

Function:

Introduction: **WB:** Western Blot **IP:** Immunoprecipitation **IHC:** Immunohistochemistry **ChIP:** Chromatin Immunoprecipitation **ICC/IF:** Immunocytochemistry/Immunofluorescence **F:** Flow Cytometry

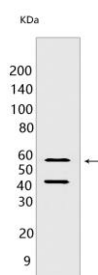
Cross Reactivity: **H:** human **M:** mouse **R:** rat **Hm:** hamster **Mk:** monkey **Vir:** virus **Ml:** mink **C:** chicken **Dm** D. melanogaster **X:** Xenopus **Z:** zebrafish **B:** bovine **Dg:** dog **Pg:** pig **Hr:** horse

For Research Use Only. Not For Use In Diagnostic Procedures.

Exerts both phospholipase and triglyceride lipase activities (PubMed:12032167, PubMed:10318835, PubMed:10192396). More active as a phospholipase than a triglyceride lipase (PubMed:12032167). Hydrolyzes triglycerides, both with short-chain fatty acyl groups (tributyryn) and long-chain fatty acyl groups (triolein) with similar levels of activity toward both types of substrates (PubMed:12032167). Hydrolyzes high density lipoproteins (HDL) more efficiently than other lipoproteins (PubMed:12032167, PubMed:10192396)..

Validation Data:

LIPG Mouse mAb[1918] Images



Western blot (SDS PAGE) analysis of extracts from human placenta tissue.Using LIPG Mouse mAb IgG [1918] at dilution of 1:1000 incubated at 4°C over night.

View more information on <http://naturebios.com>

IMPORTANT: For western blots, incubate membrane with diluted primary antibody in 1% w/v Milk, 1X TBST at 4°C overnight.