

PSMB9/LMP2 Rabbit mAb[RO60]

Cat NO. :A97015

Information:

Applications	Reactivity:	UniProt ID:	MW(kDa)	Host	Isotype	Size
WB,IHC	H,M,R	P28065	21KDa	Rabbit	IgG	50ul 100ul,200ul

Applications detail:

Application	Dilution
WB	1:1000-2000
IHC	1:100
The optimal dilutions should be determined by the end user	

Conjugate:

UnConjugate

Form:

Liquid

sensitivity:

Endogenous

Purification:

Protein A purification

Specificity:

Antibody is produced by immunizing animals with a synthetic peptide of human PSMB9/LMP2.

Storage buffer and conditions:

Antibody store in 10 mM PBS, 0.5mg/ml BSA, 50% glycerol (buffer) .

Shipped at 4°C. Store at-20°C or -80°C.

Products are valid for one natural year of receipt.Avoid repeated freeze / thaw cycles.

Tissue specificity:

Subcellular location:

Cytoplasm. Nucleus.

Function:

The proteasome is a multicatalytic proteinase complex which is characterized by its ability to cleave peptides with Arg, Phe, Tyr, Leu, and Glu adjacent to the leaving group at neutral or slightly basic pH. The proteasome has an ATP-dependent proteolytic activity. This subunit is involved in antigen processing to generate class I binding peptides. Replacement of PSMB6 by PSMB9 increases the capacity of the immunoproteasome to cleave model peptides after hydrophobic and basic residues..

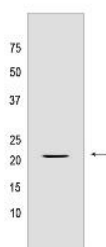
Introduction: **WB:** Western Blot **IP:** Immunoprecipitation **IHC:** Immunohistochemistry **ChIP:** Chromatin Immunoprecipitation **ICC/IF:** Immunocytochemistry/Immunofluorescence **F:** Flow Cytometry

Cross Reactivity: **H:** human **M:** mouse **R:** rat **Hm:** hamster **Mk:** monkey **Vir:** virus **Ml:** mink **C:** chicken **Dm** D. melanogaster **X:** Xenopus **Z:** zebrafish **B:** bovine
Dg: dog **Pg:** pig **Hr:** horse

For Research Use Only. Not For Use In Diagnostic Procedures.

Validation Data:

PSMB9/LMP2 Rabbit mAb[RO60] Images



Western blot (SDS PAGE) analysis of extracts from Raji cells. Using PSMB9/LMP2 Rabbit mAb IgG [RO60] at dilution of 1:1000 incubated at 4°C over night.

View more information on <http://naturebios.com>

IMPORTANT: For western blots, incubate membrane with diluted primary antibody in 1% w/v Milk, 1X TBST at 4°C overnight.